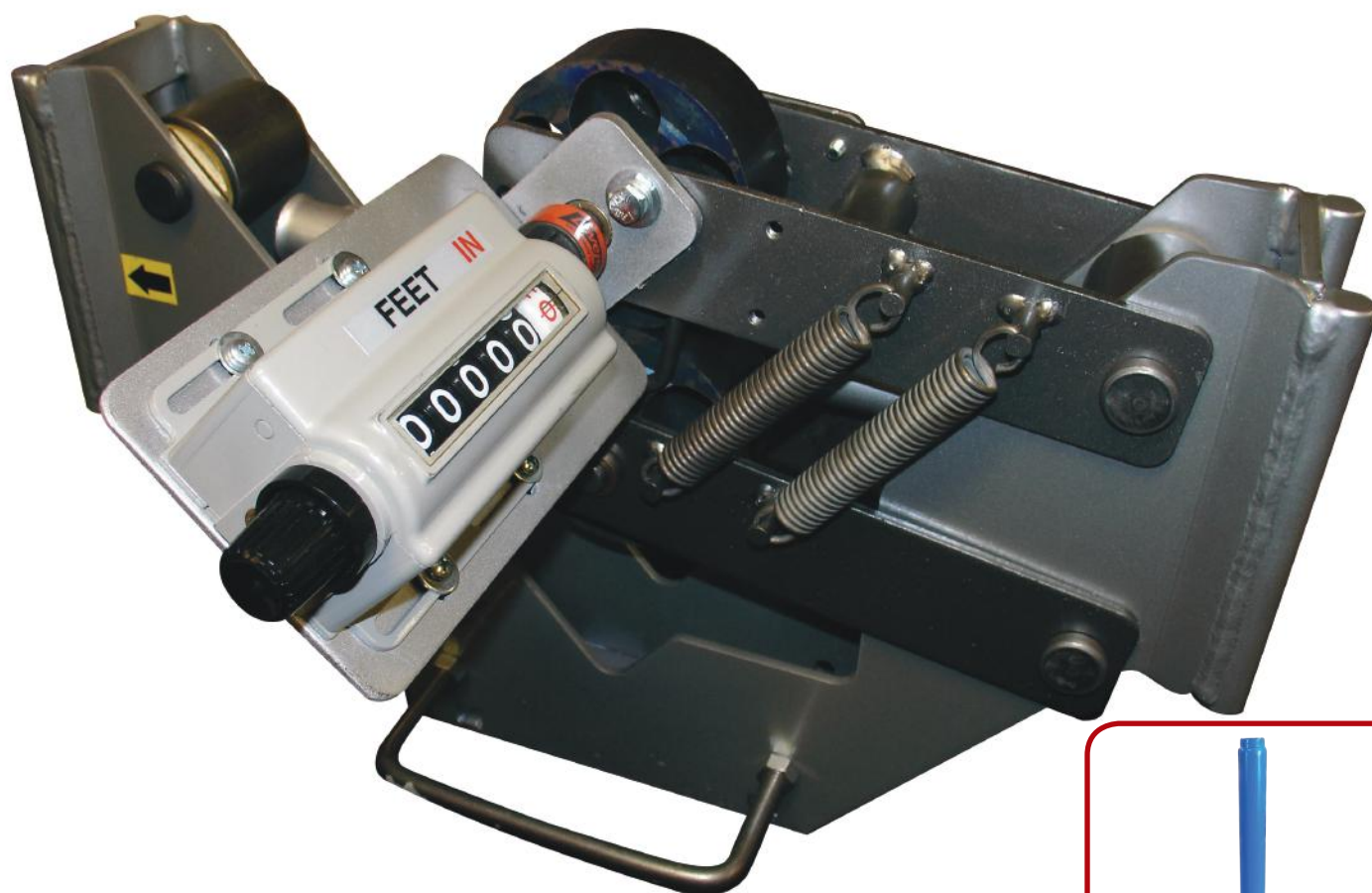


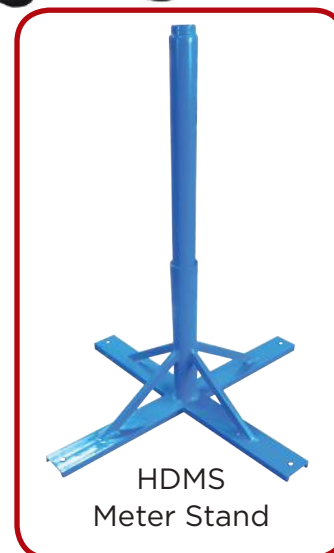
MODEL 1700 SP

Material Measuring Meter

For flexible material 1/8" to 2" diameter +/- 1/2% accuracy.



Installs on most cable machinery or stands
5/8" diameter mounting pin included (not shown)



HDMS
Meter Stand

REEL  **MATIC**®

The Leader in Reeling, Coiling & Processing Solutions

6408 S. Eastern Avenue | Oklahoma City, OK. 73149
405.672.0000 | 405.672.7200 Fax
www.reelomatic.com

MODEL 1700 SP

Material Measuring Meter

Standard Features:

The Reel-O-Matic® Model 1700 material length measurer offers increased accuracy, durability and operator convenience.

The ROM 1700 has a measuring head that literally floats along the material being measured. That means less vibration between the material and the measurer - therefore greater accuracy.

All counters feature large easy to read numerals available in Imperial or Metric.

A fairlead for improved accuracy when measuring material under 1/2" dia. is provided. When not in use, the fairlead swings away in a second's time. Resets to ZERO with one press of a lever or turn of a knob.

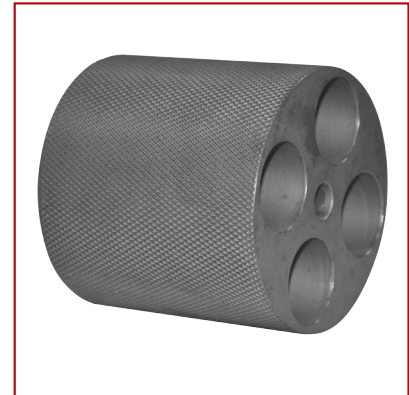
LOANER AND RECALIBRATION SERVICE PROGRAM!

Ordering Note:

Take-up counter faces material entry of meter.
Pay-out counter faces material exit of meter.

Pay-Out Options

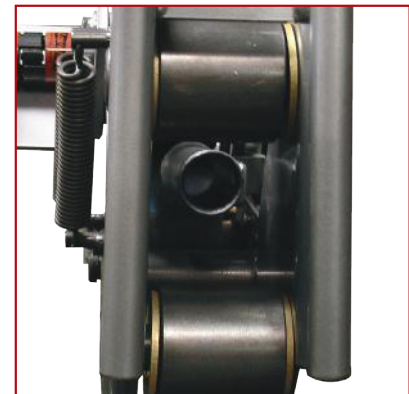
- Predetermined Stop-To-Length Counters
- Digital Read-Out
- Two-Level Counters
- Knurled or Urethane Coated Wheels
- Side Loading
- Integral Cutters
- Metric Counters



Knurled Wheels



Optional Metric Counter



Self-Storing Fairlead

REEL-O-MATIC®

The Leader in Reeling, Coiling & Processing Solutions

6408 S. Eastern Avenue | Oklahoma City, OK. 73149
405.672.0000 | 405.672.7200 Fax
www.reelomatic.com